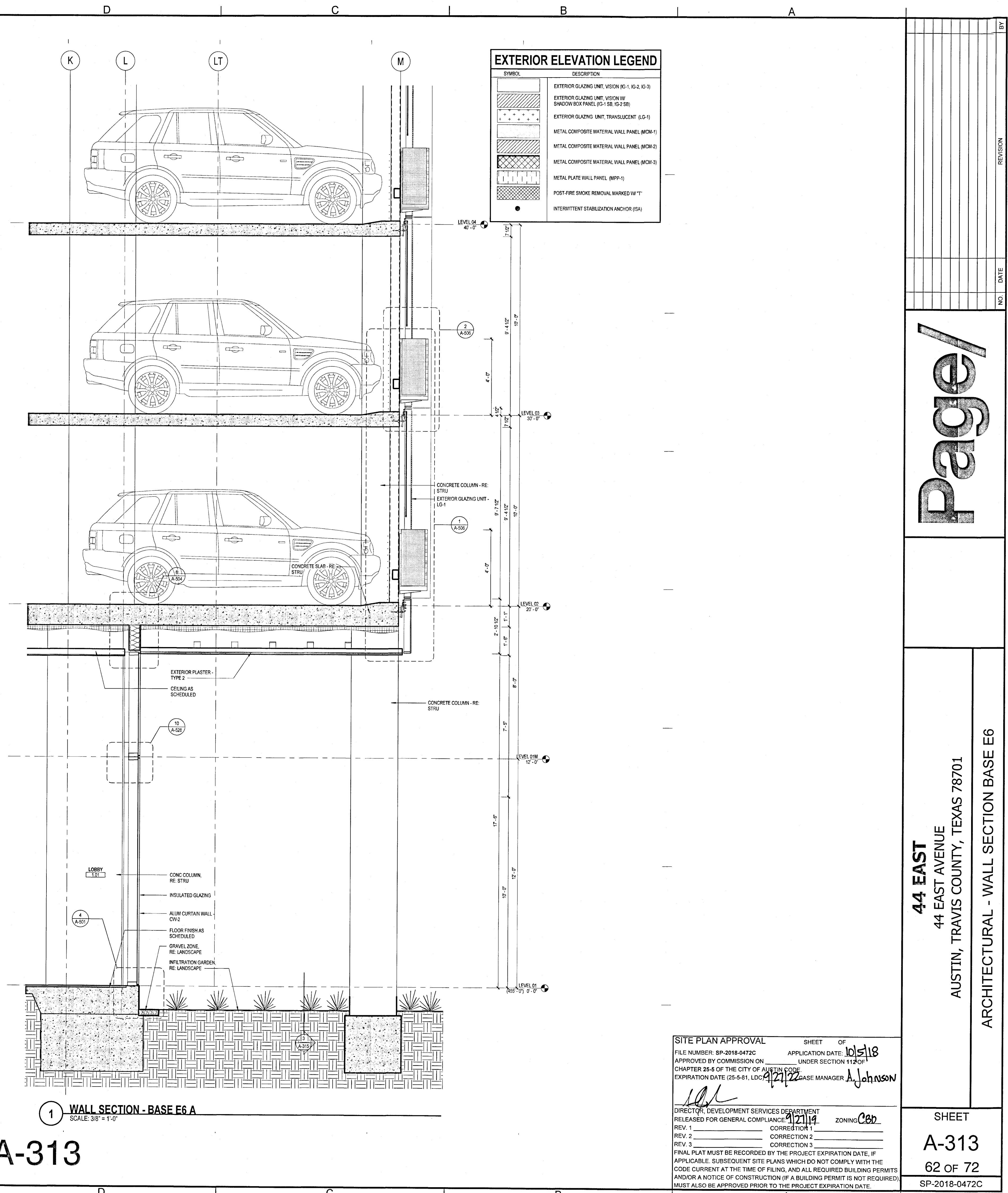


2 EXTERIOR ELEV DETAIL - BASE E6 A
SCALE: 3/8" = 1'-0"



1 WALL SECTION - BASE E6 A
SCALE: 3/8" = 1'-0"

SYMBOL	DESCRIPTION
[Symbol]	EXTERIOR GLAZING UNIT, VISION (IG-1, IG-2, IG-3)
[Symbol]	EXTERIOR GLAZING UNIT, VISION W/ SHADOW BOX PANEL (IG-1 SB, IG-2 SB)
[Symbol]	EXTERIOR GLAZING UNIT, TRANSLUCENT (LG-1)
[Symbol]	METAL COMPOSITE MATERIAL WALL PANEL (MCM-1)
[Symbol]	METAL COMPOSITE MATERIAL WALL PANEL (MCM-2)
[Symbol]	METAL COMPOSITE MATERIAL WALL PANEL (MCM-3)
[Symbol]	METAL PLATE WALL PANEL (MPP-1)
[Symbol]	POST-FIRE SMOKE REMOVAL MARKED W/ "T"
[Symbol]	INTERMITTENT STABILIZATION ANCHOR (ISA)

A-313

Page 1

44 EAST
44 EAST AVENUE
AUSTIN, TRAVIS COUNTY, TEXAS 78701
ARCHITECTURAL - WALL SECTION BASE E6

SITE PLAN APPROVAL SHEET OF
FILE NUMBER: SP-2018-0472C APPLICATION DATE: 10/5/18
APPROVED BY COMMISSION ON UNDER SECTION 112 OF
CHAPTER 25-8 OF THE CITY OF AUSTIN CODE
EXPIRATION DATE (25-8-01, LDC) 4/21/22 CASE MANAGER A. JOHNSON
DIRECTOR, DEVELOPMENT SERVICES DEPARTMENT
RELEASED FOR GENERAL COMPLIANCE 9/21/19 ZONING C6b
REV. 1 CORRECTION 1
REV. 2 CORRECTION 2
REV. 3 CORRECTION 3
FINAL PLAT MUST BE RECORDED BY THE PROJECT EXPIRATION DATE, IF APPLICABLE. SUBSEQUENT SITE PLANS WHICH DO NOT COMPLY WITH THE CODE CURRENT AT THE TIME OF FILING, AND ALL REQUIRED BUILDING PERMITS AND/OR A NOTICE OF CONSTRUCTION (IF A BUILDING PERMIT IS NOT REQUIRED), MUST ALSO BE APPROVED PRIOR TO THE PROJECT EXPIRATION DATE.

SHEET
A-313
62 OF 72
SP-2018-0472C