

G F E D C B A

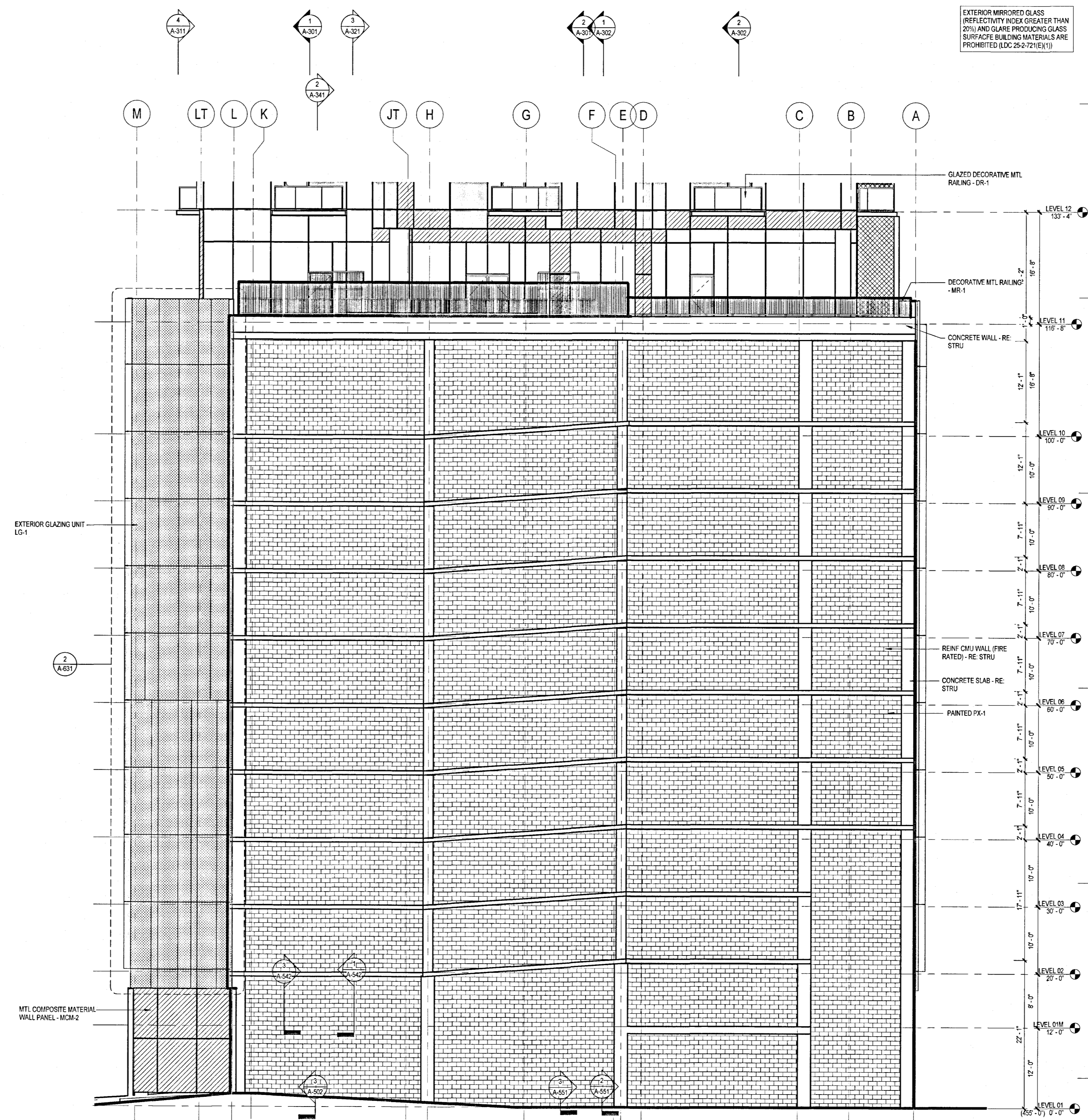
EXTERIOR GENERAL NOTES

- REFER TO EXTERIOR ELEVATION LEGEND FOR MATERIAL TYPES SHOWN HERE.
- REFER TO A-300 SERIES FOR WALL SECTIONS AND A-500 SERIES FOR EXTERIOR DETAILS.
- REFER TO A-400 SERIES FOR GLAZING ELEVATIONS FOR DIMENSIONS/ TYPES AND GRAPHIC GLAZING SCHEDULE AT BASE AND TOWER LEVELS.
- REFER TO A-600 SERIES FOR LOUVER SCHEDULE, LOCATIONS, SIZES, AND TYPES.
- INTERMITTENT STABILIZATION ANCHORS (ISA) TO ALIGN WITH DAVIT BASE LOCATIONS ON ROOF. WITHIN 1/2" TOLERANCE. INSTALL ANCHOR INTO CURTAIN WALL PER CURTAIN WALL MANUFACTURER'S SPECIFICATIONS. REFER TO ROOF PLANS FOR DAVIT BASE LOCATIONS.
- BUILDING FACADE MAINTENANCE EQUIPMENT LOCATIONS SHOWN DELINEATE A CONCEPTUAL EQUIPMENT INSTALLATION FOR GLAZED CURTAIN WALL CLEANING AND LIGHT BUILDING MAINTENANCE. FINAL DESIGN SHALL BE SUPPLIED BY THE EQUIPMENT MANUFACTURER TO ENSURE THE DESIGN'S COMPATIBILITY WITH THE EQUIPMENT SELECTIONS AND FINAL INSTALLATION.

EXTERIOR ELEVATION LEGEND

SYMBOL	DESCRIPTION
[Pattern]	EXTERIOR GLAZING UNIT, VISION (IG-1)
[Pattern]	EXTERIOR GLAZING UNIT, VISION W/ SHADOW BOX PANEL (IG-1 SB)
[Pattern]	EXTERIOR GLAZING UNIT, TRANSLUCENT (IG-1)
[Pattern]	METAL COMPOSITE MATERIAL WALL PANEL (MCM-1)
[Pattern]	METAL COMPOSITE MATERIAL WALL PANEL (MCM-2)
[Pattern]	METAL COMPOSITE MATERIAL WALL PANEL (MCM-3)
[Pattern]	METAL PLATE WALL PANEL (MPP-1)
[Pattern]	POST-FIRE SMOKE REMOVAL*
[Symbol]	INTERMITTENT STABILIZATION ANCHOR (ISA)

EXTERIOR MIRRORRED GLASS (REFLECTIVITY INDEX GREATER THAN 20%) AND GLARE PRODUCING GLASS SURFACES BUILDING MATERIALS ARE PROHIBITED (LDC 25-2-72(E)(1))



1 EXTERIOR ELEVATION - NORTH - BASE (L1-11)
SCALE: 3/32" = 1'-0"

A-207



SITE PLAN APPROVAL SHEET OF 11
 FILE NUMBER: SP-2018-0472C APPLICATION DATE: 10/5/18
 APPROVED BY COMMISSION ON UNDER SECTION 113.05 OF
 CHARTER 25-5 OF THE CITY OF AUSTIN CODE EXPIRATION DATE (25-6-81, LDC) 9/21/28 CASE MANAGER: Johnson
 DIRECTOR, DEVELOPMENT SERVICES DEPARTMENT
 RELEASED FOR GENERAL COMPLIANCE 9/27/19 ZONING: C80
 REV. 1 CORRECTION 1
 REV. 2 CORRECTION 2
 REV. 3 CORRECTION 3
 FINAL PLAT MUST BE RECORDED BY THE PROJECT EXPIRATION DATE, IF APPLICABLE. SUBSEQUENT SITE PLANS WHICH DO NOT COMPLY WITH THE CODE CURRENT AT THE TIME OF FILING, AND ALL REQUIRED BUILDING PERMITS AND/OR A NOTICE OF CONSTRUCTION (IF A BUILDING PERMIT IS NOT REQUIRED), MUST ALSO BE APPROVED PRIOR TO THE PROJECT EXPIRATION DATE.

NO.	DATE	REVISION	BY

Page 1

44 EAST
 44 EAST AVENUE
 AUSTIN, TRAVIS COUNTY, TEXAS 78701
 ARCHITECTURAL - ELEVATION - NORTH - BASE

SHEET
 A-207
 60 OF 72
 SP-2018-0472C