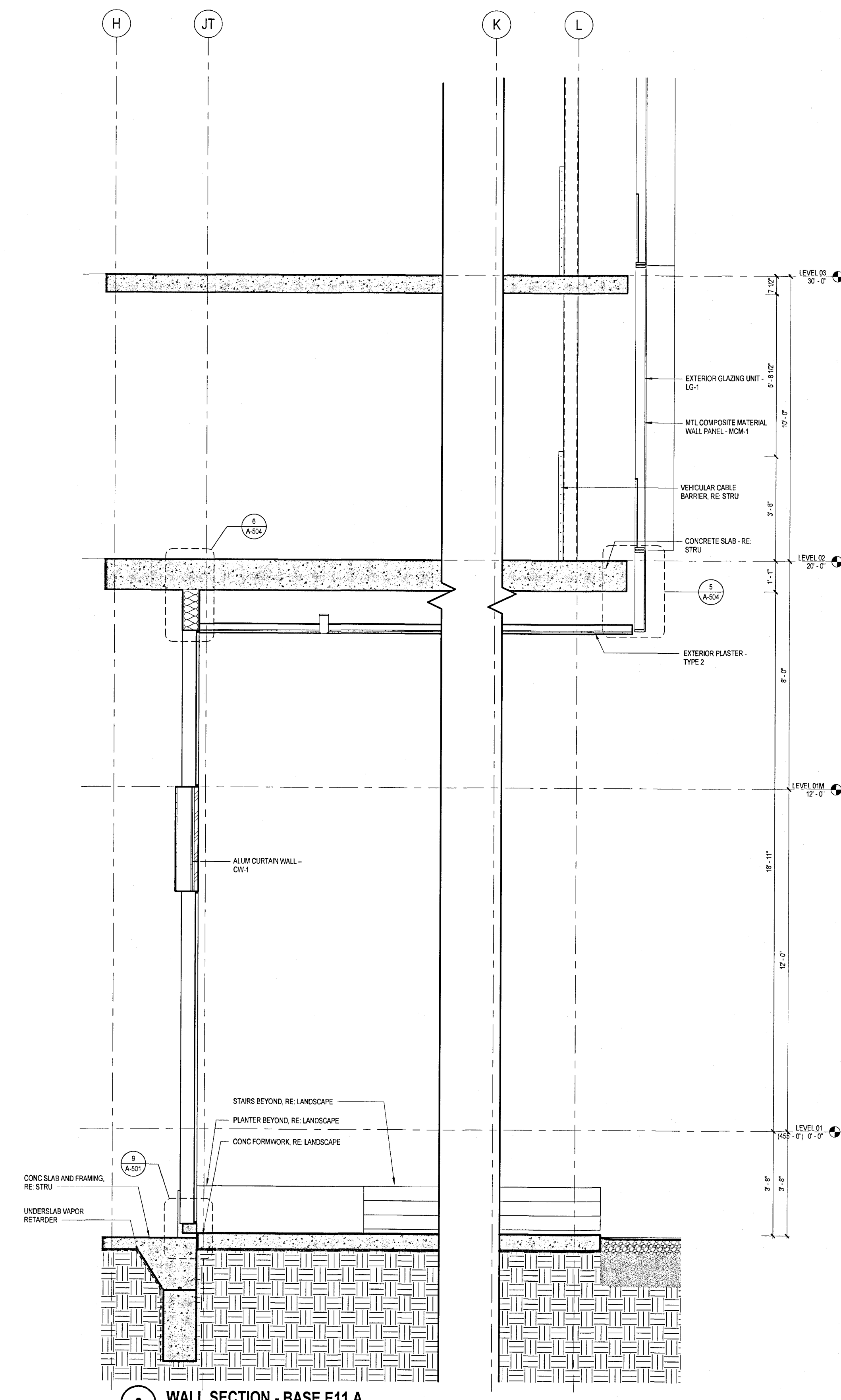


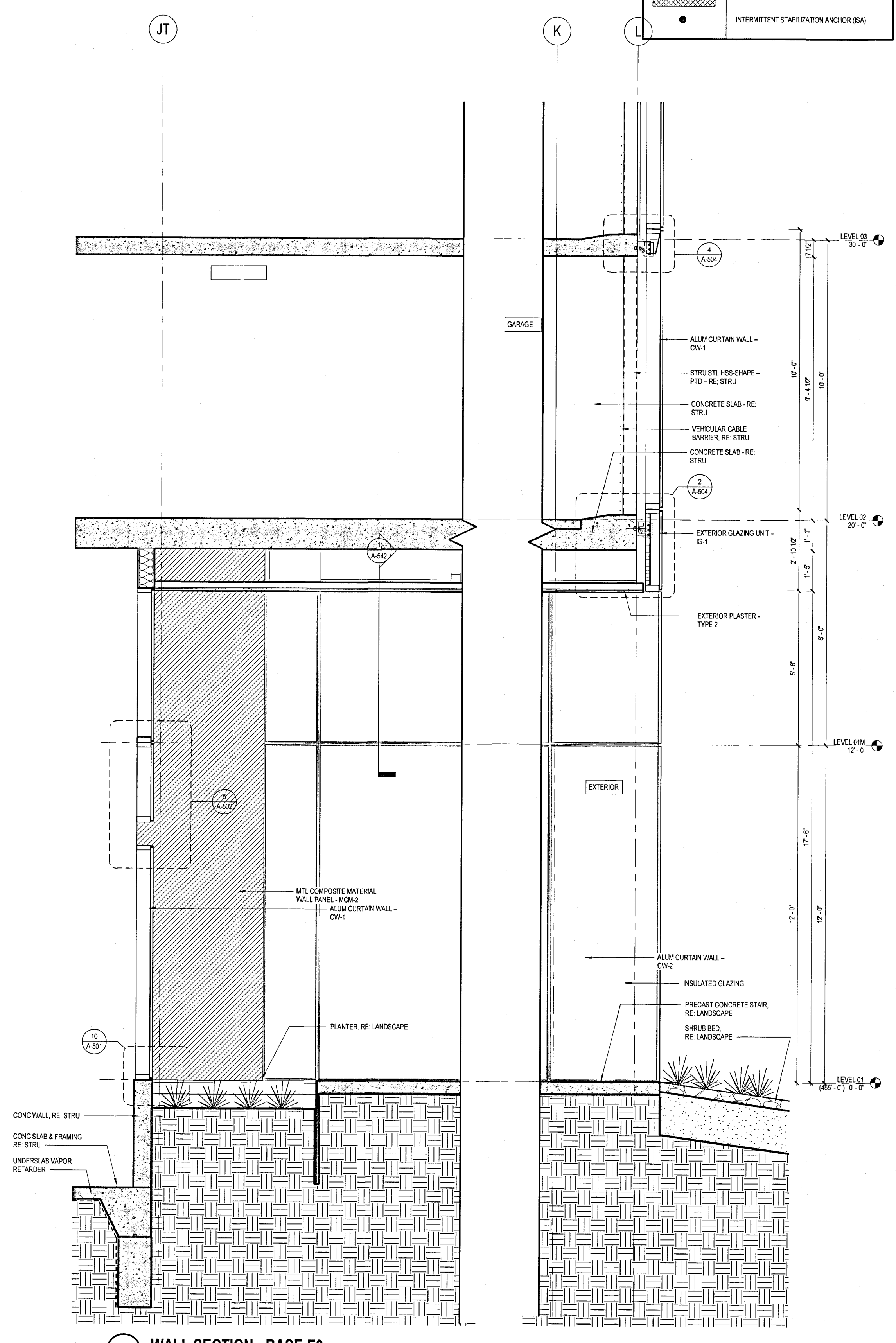
G F E D C B A

6
5
4
3
2
1

EXTERIOR ELEVATION LEGEND	
SYMBOL	DESCRIPTION
[Pattern]	EXTERIOR GLAZING UNIT, VISION (IG-1)
[Pattern]	EXTERIOR GLAZING UNIT, VISION W/ SHADOW BOX PANEL (IG-1 SB)
[Pattern]	EXTERIOR GLAZING UNIT, TRANSLUCENT (IG-1)
[Pattern]	METAL COMPOSITE MATERIAL WALL PANEL (MCM-1)
[Pattern]	METAL COMPOSITE MATERIAL WALL PANEL (MCM-2)
[Pattern]	METAL COMPOSITE MATERIAL WALL PANEL (MCM-3)
[Pattern]	METAL PLATE WALL PANEL (MPP-1)
[Pattern]	POST-FIRE SMOKE REMOVAL*
[Symbol]	INTERMITTENT STABILIZATION ANCHOR (ISA)



2 WALL SECTION - BASE E11 A
SCALE: 3/8" = 1'-0"



1 WALL SECTION - BASE E9
SCALE: 3/8" = 1'-0"

A-316

NO.	DATE	REVISION	BY

Page 1

44 EAST
44 EAST AVENUE
AUSTIN, TRAVIS COUNTY, TEXAS 78701
ARCHITECTURAL - WALL SECTION BASE E11A

SITE PLAN APPROVAL SHEET OF
 FILE NUMBER: SP-2018-0472C APPLICATION DATE: 10/5/18
 APPROVED BY COMMISSION ON UNDER SECTION 112 OF
 CHAPTER 25-B OF THE CITY OF AUSTIN CODE
 EXPIRATION DATE (25-5-81, LDC) 1/21/22 CASE MANAGER: A. Johnson
 DIRECTOR, DEVELOPMENT SERVICES DEPARTMENT
 RELEASED FOR GENERAL COMPLIANCE: 9/2/19 ZONING: CBD
 REV. 1 CORRECTION 1
 REV. 2 CORRECTION 2
 REV. 3 CORRECTION 3
 FINAL PLAT MUST BE RECORDED BY THE PROJECT EXPIRATION DATE, IF
 APPLICABLE. SUBSEQUENT SITE PLANS WHICH DO NOT COMPLY WITH THE
 CODE CURRENT AT THE TIME OF FILING, AND ALL REQUIRED BUILDING PERMITS
 AND/OR A NOTICE OF CONSTRUCTION (IF A BUILDING PERMIT IS NOT REQUIRED),
 MUST ALSO BE APPROVED PRIOR TO THE PROJECT EXPIRATION DATE.

SHEET
A-316
65 OF 72
SP-2018-0472C