

G F E D C B A

EXTERIOR GENERAL NOTES

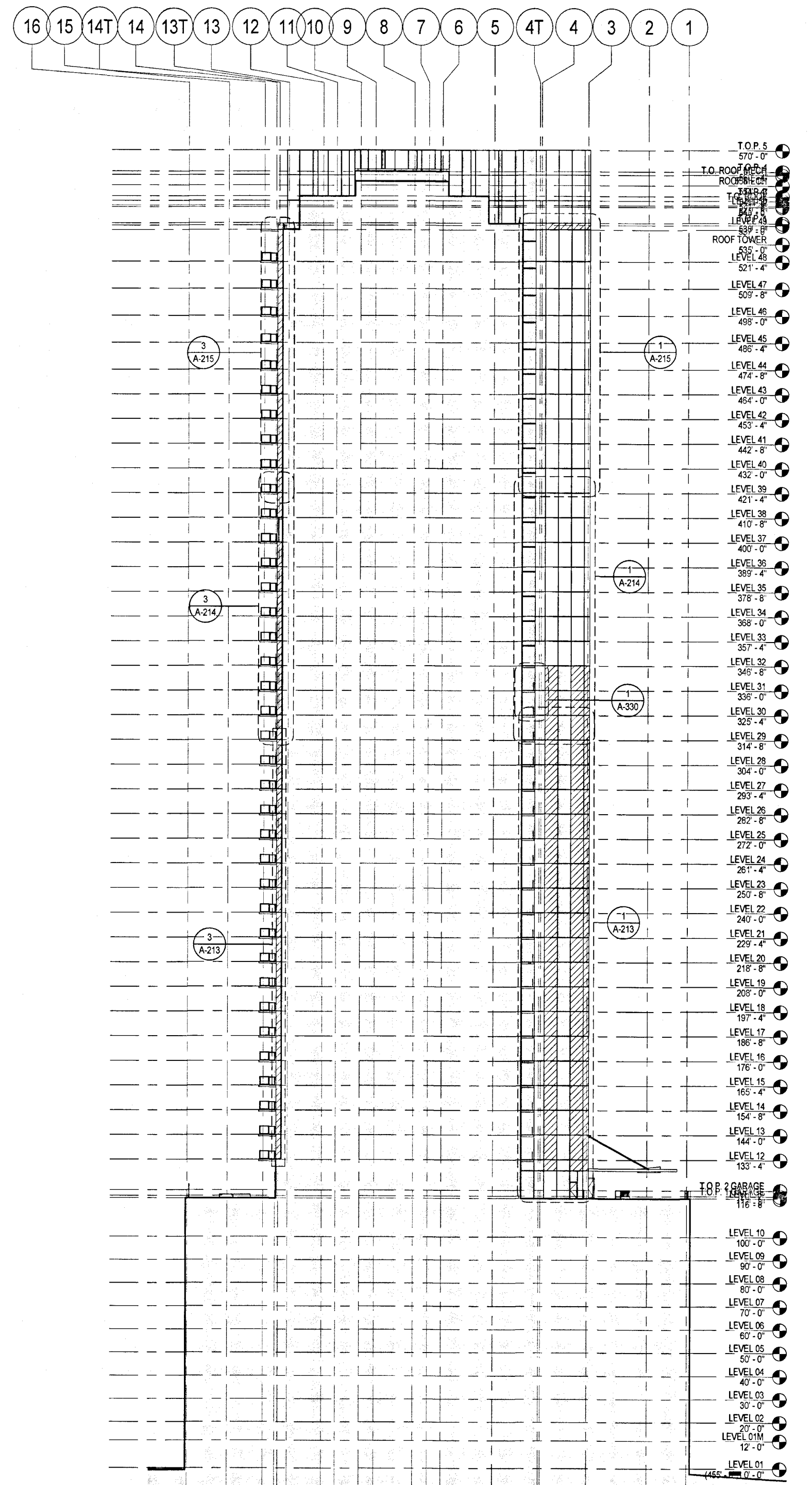
1. REFER TO EXTERIOR ELEVATION LEGEND FOR MATERIAL TYPES SHOWN HERE.
2. REFER TO A-200 SERIES FOR WALL SECTIONS AND A-500 SERIES FOR EXTERIOR DETAILS.
3. REFER TO A-600 SERIES FOR GLAZING ELEVATIONS FOR DIMENSIONS, TYPES AND GRAPHIC GLAZING SCHEDULE AT BASE AND TOWER LEVELS.
4. REFER TO A-650 SERIES FOR LOUVER SCHEDULE, LOCATIONS, SIZES, AND TYPES.
5. INTERMITTENT STABILIZATION ANCHORS (ISA) TO ALIGN WITH DAWT BASE LOCATIONS ON ROOF WITHIN 12" TOLERANCE. INSTALL ANCHORS AND CURTAIN WALL PER CURTAIN WALL MANUFACTURER'S GUIDELINES. REFER TO ROOF PLANS FOR DAWT BASE LOCATIONS.
6. BUILDING FACADE MAINTENANCE EQUIPMENT LOCATIONS SHOWN DELINEATE A CONCEPTUAL EQUIPMENT INSTALLATION FOR GLAZED CURTAIN WALL CLEANING AND LIGHT BUILDING MAINTENANCE. FINAL DESIGN SHALL BE SUPPLIED BY THE EQUIPMENT MANUFACTURER TO ENSURE THE DESIGN'S COMPATIBILITY WITH THE EQUIPMENT SELECTIONS AND FINAL INSTALLATION.

EXTERIOR ELEVATION LEGEND

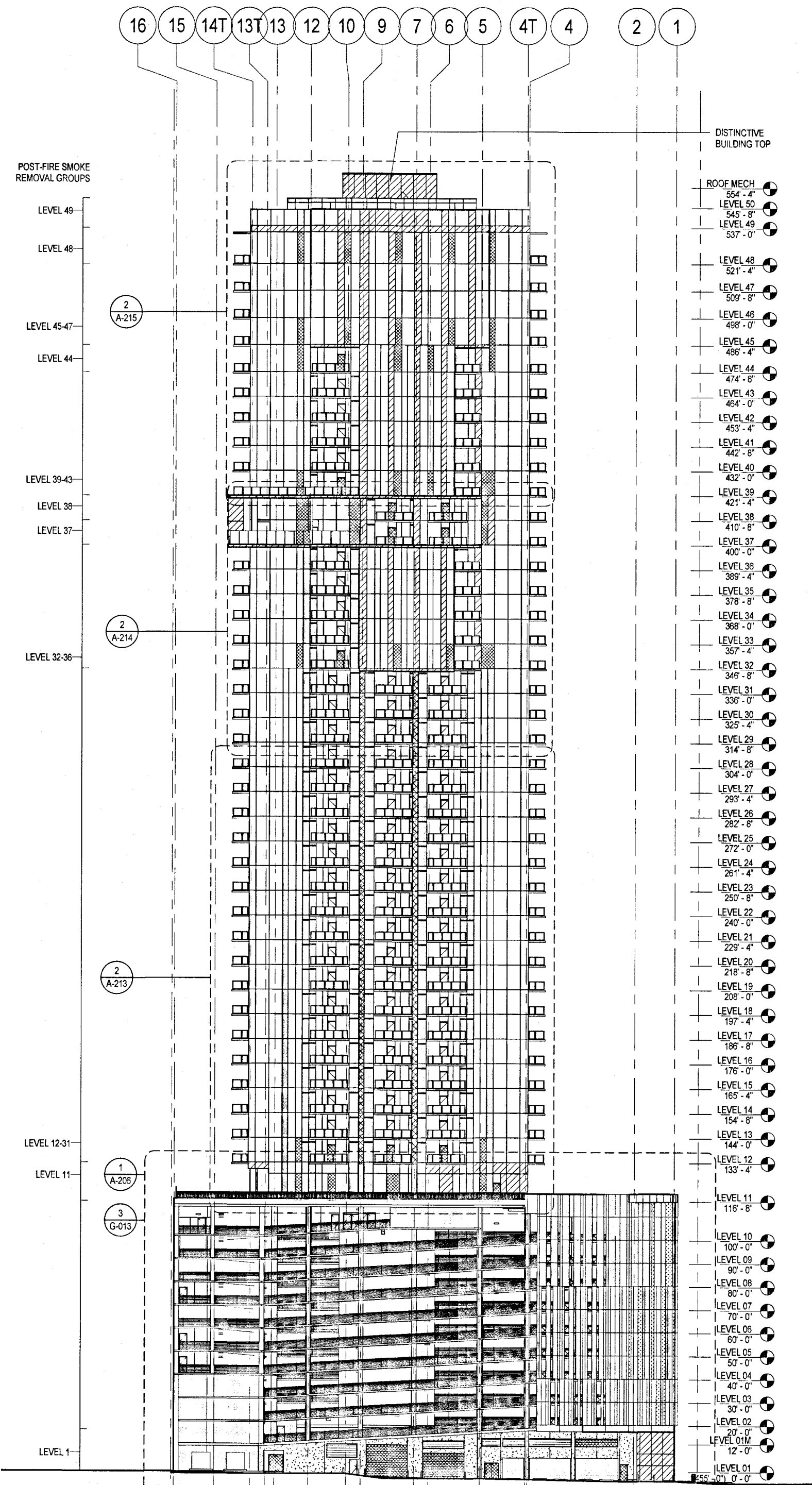
SYMBOL	DESCRIPTION
[Pattern]	EXTERIOR GLAZING UNIT, VISION (G-1)
[Pattern]	EXTERIOR GLAZING UNIT, VISION W/ SHADOW BOX PANEL (G-1-SB)
[Pattern]	EXTERIOR GLAZING UNIT, TRANSLUCENT (L-G-1)
[Pattern]	METAL COMPOSITE MATERIAL WALL PANEL (MCM-1)
[Pattern]	METAL COMPOSITE MATERIAL WALL PANEL (MCM-2)
[Pattern]	METAL COMPOSITE MATERIAL WALL PANEL (MCM-3)
[Pattern]	METAL PLATE WALL PANEL (MPP-1)
[Pattern]	POST-FIRE SMOKE REMOVAL*
[Symbol]	INTERMITTENT STABILIZATION ANCHOR (ISA)

*OPERABLE WINDOW/PANELS: 40 SF MIN OF GLASS PROVIDED / 50 LF

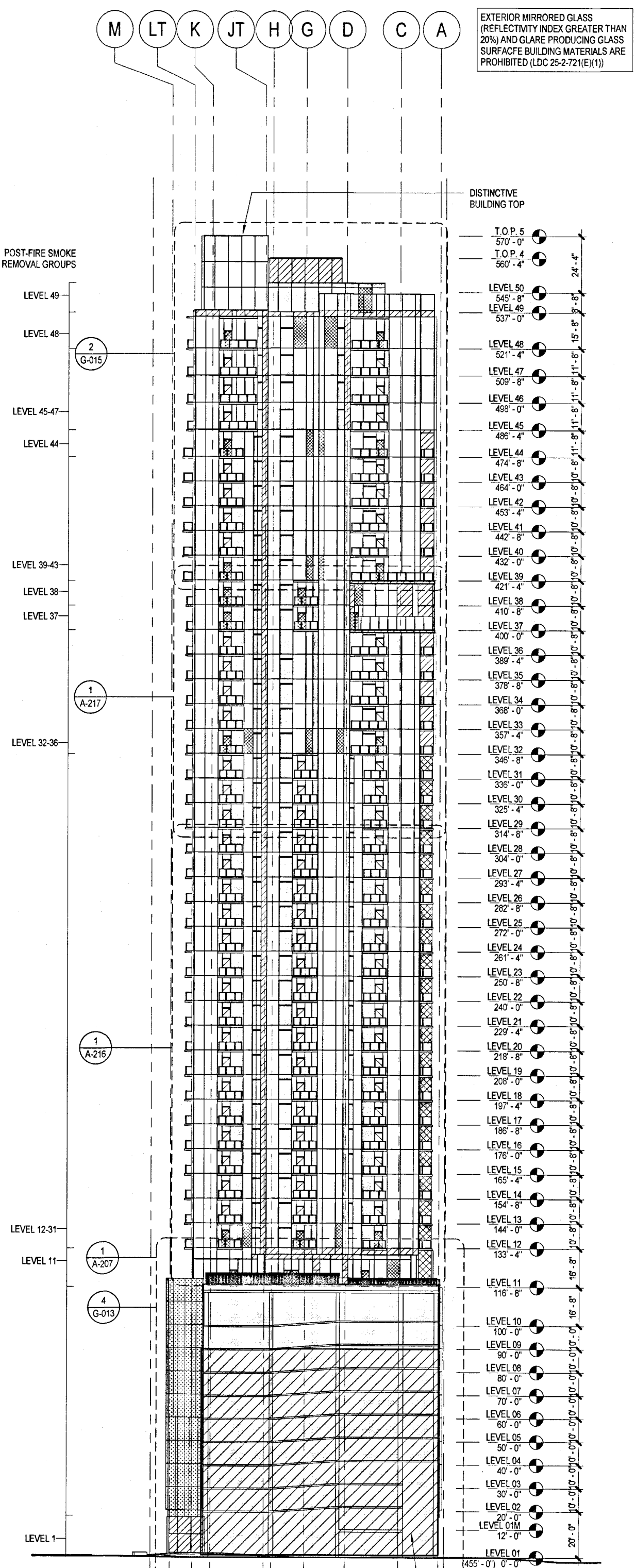
EXTERIOR MIRRORING GLASS (REFLECTIVITY INDEX GREATER THAN 20%) AND GLARE PRODUCING GLASS SURFACE BUILDING MATERIALS ARE PROHIBITED (LDC 25-2-72(E)(1))



3 EXTERIOR ELEVATION - PARTIAL - WEST
NOT TO SCALE



2 EXTERIOR ELEVATION - WEST
NOT TO SCALE



1 EXTERIOR ELEVATION - NORTH
NOT TO SCALE

A-202

Page/

44 EAST
44 EAST AVENUE
AUSTIN, TRAVIS COUNTY, TEXAS 78701
ARCHITECTURAL - ELEVATION WEST

SITE PLAN APPROVAL SHEET OF
 FILE NUMBER: SP-2018-0472C APPLICATION DATE: 10/5/18
 APPROVED BY COMMISSION ON UNDER SECTION 112 OF CHAPTER 25-B OF THE CITY OF AUSTIN CODE
 EXPIRATION DATE (25-5-81, LDC): 9/21/22 CASE MANAGER: A. Johnson
 DIRECTOR, DEVELOPMENT SERVICES DEPARTMENT
 RELEASED FOR GENERAL COMPLIANCE: 9/21/19 ZONING: C60
 REV. 1 CORRECTION 1
 REV. 2 CORRECTION 2
 REV. 3 CORRECTION 3
 FINAL PLAT MUST BE RECORDED BY THE PROJECT EXPIRATION DATE, IF APPLICABLE. SUBSEQUENT SITE PLANS WHICH DO NOT COMPLY WITH THE CODE CURRENT AT THE TIME OF FILING, AND ALL REQUIRED BUILDING PERMITS AND/OR A NOTICE OF CONSTRUCTION (IF A BUILDING PERMIT IS NOT REQUIRED) MUST ALSO BE APPROVED PRIOR TO THE PROJECT EXPIRATION DATE.

SHEET
A-202
55 OF 72
SP-2018-0472C

REVISION
DATE
NO.