

G F E D C B A

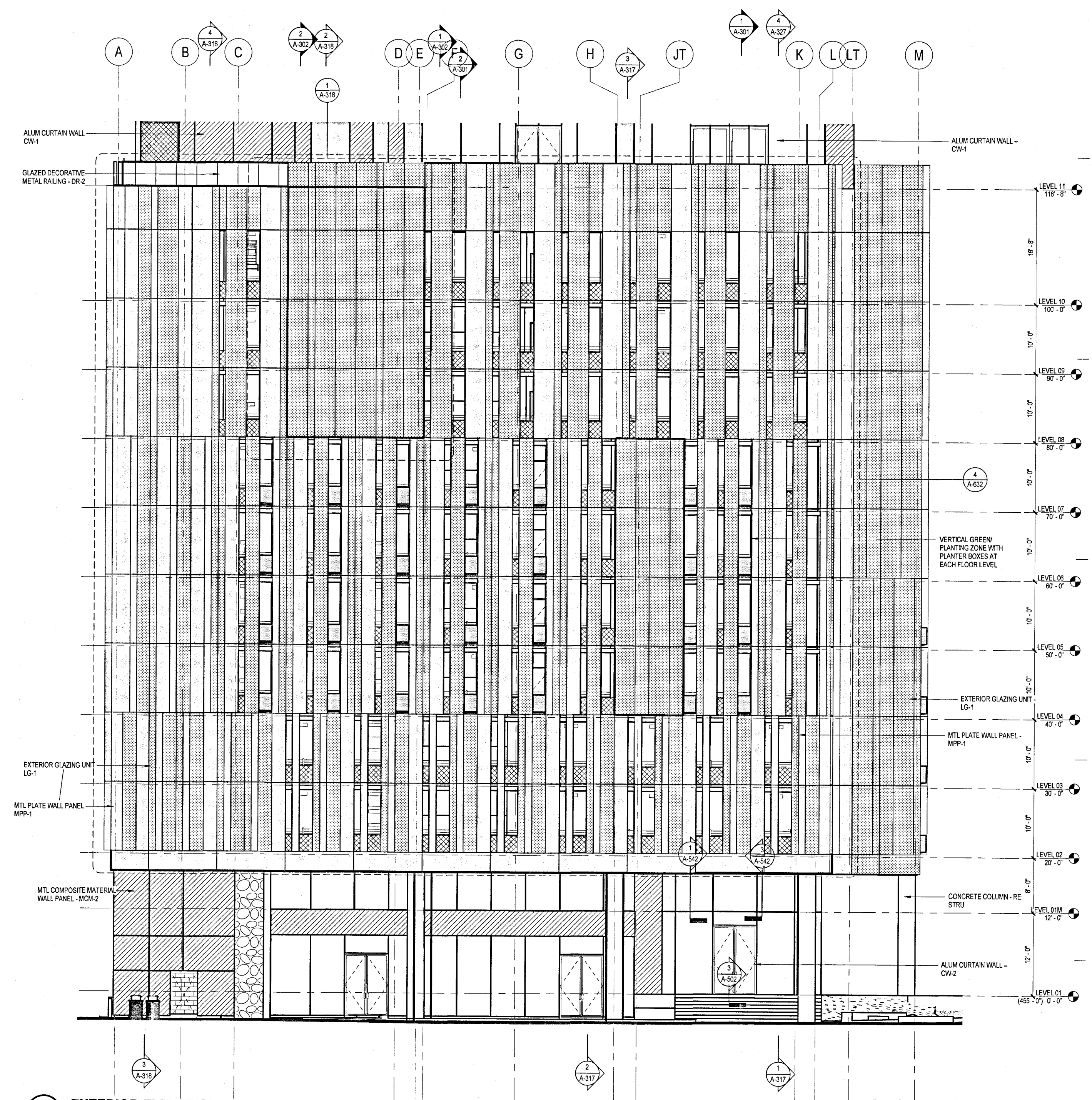
EXTERIOR GENERAL NOTES

- REFER TO EXTERIOR ELEVATION LEGEND FOR MATERIAL TYPES SHOWN HERE.
- REFER TO A-300 SERIES FOR WALL SECTIONS AND A-500 SERIES FOR EXTERIOR DETAILS.
- REFER TO A-400 SERIES FOR GLAZING ELEVATIONS FOR DIMENSIONS, TYPES AND GRAPHIC GLAZING SCHEDULE AT BASE AND TOWER LEVELS.
- REFER TO A-450 SERIES FOR LOUVER SCHEDULE, LOCATIONS, SIZES, AND TYPES.
- INTERMITTANT STABILIZATION ANCHORS (ISA) TO ALIGN WITH DAVIT BASE LOCATIONS ON ROOF WITHIN 12" TOLERANCE. INSTALL ANCHOR INTO CURTAIN WALL PER CURTAIN WALL MANUFACTURER'S GUIDELINES. REFER TO ROOF PLANS FOR DAVIT BASE LOCATIONS.
- BUILDING FACADE MAINTENANCE EQUIPMENT LOCATIONS SHOWN DELINEATE A CONCEPTUAL EQUIPMENT INSTALLATION FOR GLAZED CURTAIN WALL CLEANING AND LIGHT BUILDING MAINTENANCE. FINAL DESIGN SHALL BE SUPPLIED BY THE EQUIPMENT MANUFACTURER TO ENSURE THE DESIGN'S COMPATIBILITY WITH THE EQUIPMENT SELECTIONS AND FINAL INSTALLATION.

EXTERIOR ELEVATION LEGEND

SYMBOL	DESCRIPTION
[Pattern]	EXTERIOR GLAZING UNIT, VISION (IG-1)
[Pattern]	EXTERIOR GLAZING UNIT, VISION W/ SHADOW BOX PANEL (IG-1 SB)
[Pattern]	EXTERIOR GLAZING UNIT, TRANSLUCENT (IG-1)
[Pattern]	METAL COMPOSITE MATERIAL WALL PANEL (MCM-1)
[Pattern]	METAL COMPOSITE MATERIAL WALL PANEL (MCM-2)
[Pattern]	METAL COMPOSITE MATERIAL WALL PANEL (MCM-3)
[Pattern]	METAL PLATE WALL PANEL (MPP-1)
[Pattern]	POST-FIRE SMOKE REMOVAL*
[Symbol]	INTERMITTENT STABILIZATION ANCHOR (ISA)

EXTERIOR MIRRORRED GLASS (REFLECTIVITY INDEX GREATER THAN 20%) AND GLARE PRODUCING GLASS SURFACE BUILDING MATERIALS ARE PROHIBITED (LDC 25-5-72(CEV1))



1 EXTERIOR ELEVATION - SOUTH - BASE (L1-11)
SCALE: 3/32" = 1'-0"

A-205

Page/

44 EAST
44 EAST AVENUE
AUSTIN, TRAVIS COUNTY, TEXAS 78701
ARCHITECTURAL - ELEVATION - SOUTH - BASE

SITE PLAN APPROVAL SHEET OF
FILE NUMBER: SP-2018-0472C APPLICATION DATE: 10/5/18
APPROVED BY COMMISSION ON UNDER SECTION 112 OF
CHAPTER 25-5 OF THE CITY OF AUSTIN CODE
EXPIRATION DATE: (25-5-81, LDC) 3/21/22 CASE MANAGER: A. Johnson
DIRECTOR/DEVELOPMENT SERVICES DEPARTMENT
RELEASED FOR GENERAL COMPLIANCE 9/27/19 ZONING: RBB
REV. 1 CORRECTION 1
REV. 2 CORRECTION 2
REV. 3 CORRECTION 3
FINAL PLAT MUST BE RECORDED BY THE PROJECT EXPIRATION DATE, IF APPLICABLE. SUBSEQUENT SITE PLANS WHICH DO NOT COMPLY WITH THE CODE CURRENT AT THE TIME OF FILING, AND ALL REQUIRED BUILDING PERMITS AND/OR A NOTICE OF CONSTRUCTION (IF A BUILDING PERMIT IS NOT REQUIRED) MUST ALSO BE APPROVED PRIOR TO THE PROJECT EXPIRATION DATE.

SHEET
A-205
58 OF 72
SP-2018-0472C

G F E D C B A