

G F E D C B A

6

5

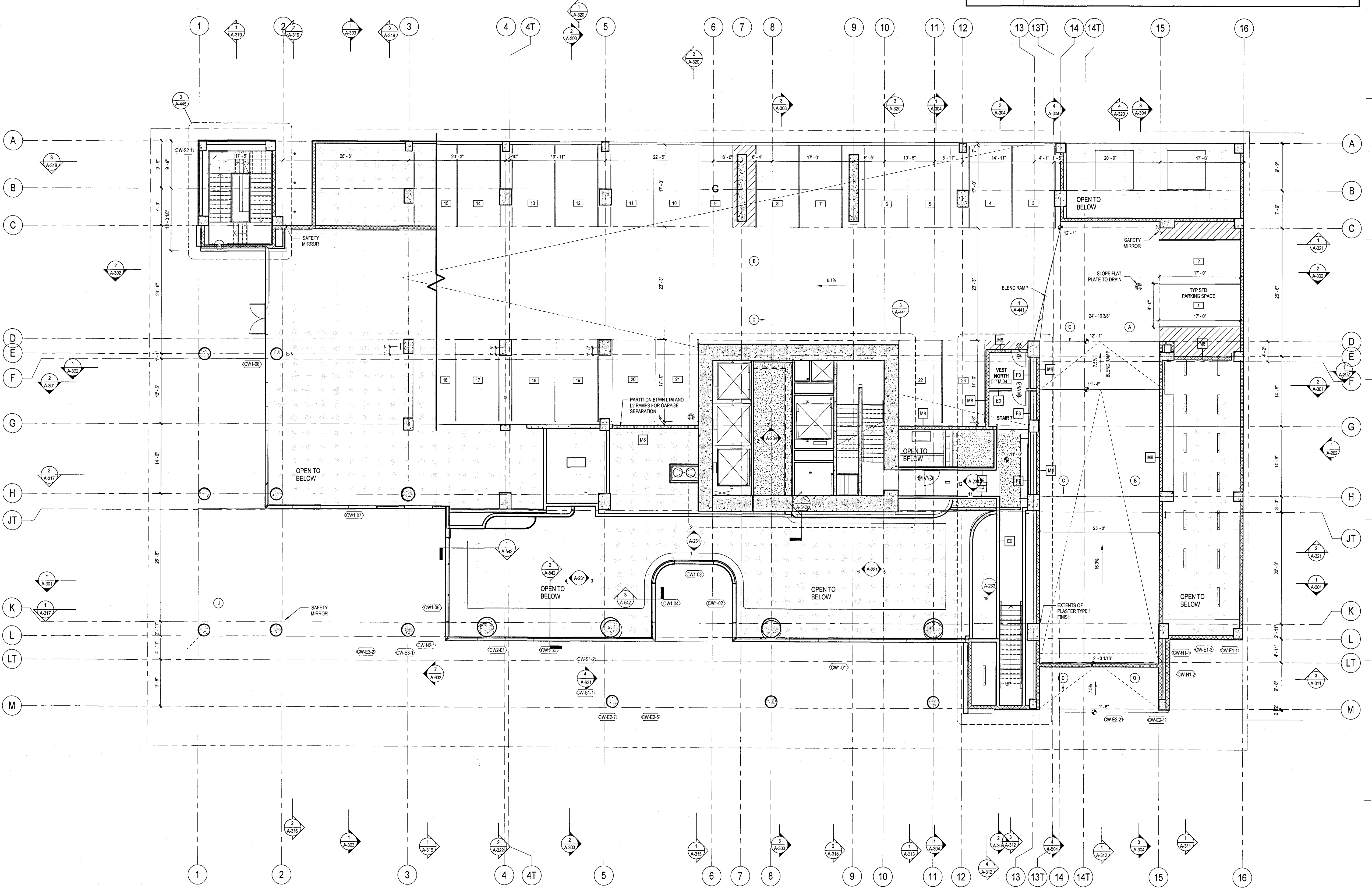
4

3

2

1

PARKING GARAGE SIGNAGE SCHED			
SYMBOL	DESCRIPTION	SYMBOL	DESCRIPTION
A	PARKING	K	LOW EMISSION & FUEL EFFICIENT ONLY (W/ LEFE LOGO)
B	PARKING	L	RESERVED PARKING (W/ ADA LOGO), RE: A-900 SERIES
C	EXT. CAUTION TWO-WAY TRAFFIC (REFER TO PLAN SYMBOL FOR DIRECTIONAL ARROW)	M	RESERVED PARKING (W/ ADA LOGO), RE: A-900 SERIES & ELECTRICAL VEHICLE CHARGING STATION
D	NOT USED	N	VAN ACCESSIBLE, RE: A-900 SERIES
E	ELEVATORS (REFER TO PLAN SYMBOL FOR DIRECTIONAL ARROW)	P	LEVEL 03 (USE CURRENT LEVEL)
F	NOT USED	Q	PARKING CLEARANCE 7'-0" (ON CLEARANCE BAR)
G	ELEVATORS 03 (USE CURRENT LEVEL)	R	NOT USED
H	CAUTION PEDESTRIAN CROSSING (W/ PEDESTRIAN LOGO)	S	ELECTRICAL VEHICLE CHARGING STATION
J	COMPACT ONLY		



1 FLOOR PLAN - LEVEL 01M
 SCALE: 3/32" = 1'-0"

A-101M

SITE PLAN APPROVAL SHEET OF
 FILE NUMBER: SP-2018-0472C APPLICATION DATE: 10-5-18
 APPROVED BY COMMISSION ON UNDER SECTION 112 OF
 CHAPTER 25-S OF THE CITY OF AUSTIN CODE
 EXPIRATION DATE (25-S-81, LDC): 9/27/22 CASE MANAGER: Johnson
 DIRECTOR/DEVELOPMENT SERVICES DEPARTMENT
 RELEASED FOR GENERAL COMPLIANCE: 12/19 ZONING: C60
 REV. 1 CORRECTION 1
 REV. 2 CORRECTION 2
 REV. 3 CORRECTION 3
 FINAL PLAT MUST BE RECORDED BY THE PROJECT EXPIRATION DATE, IF
 APPLICABLE. SUBSEQUENT SITE PLANS WHICH DO NOT COMPLY WITH THE
 CODE CURRENT AT THE TIME OF FILING, AND ALL REQUIRED BUILDING PERMITS
 AND/OR A NOTICE OF CONSTRUCTION (IF A BUILDING PERMIT IS NOT REQUIRED),
 MUST ALSO BE APPROVED PRIOR TO THE PROJECT EXPIRATION DATE.

NO.	DATE	REVISION	BY

Page 1

44 EAST
 44 EAST AVENUE
 AUSTIN, TRAVIS COUNTY, TEXAS 78701
 ARCHITECTURAL - FLOOR PLAN - LEVEL 01M

SHEET
 A-101M
 46 OF 72
 SP-2018-0472C