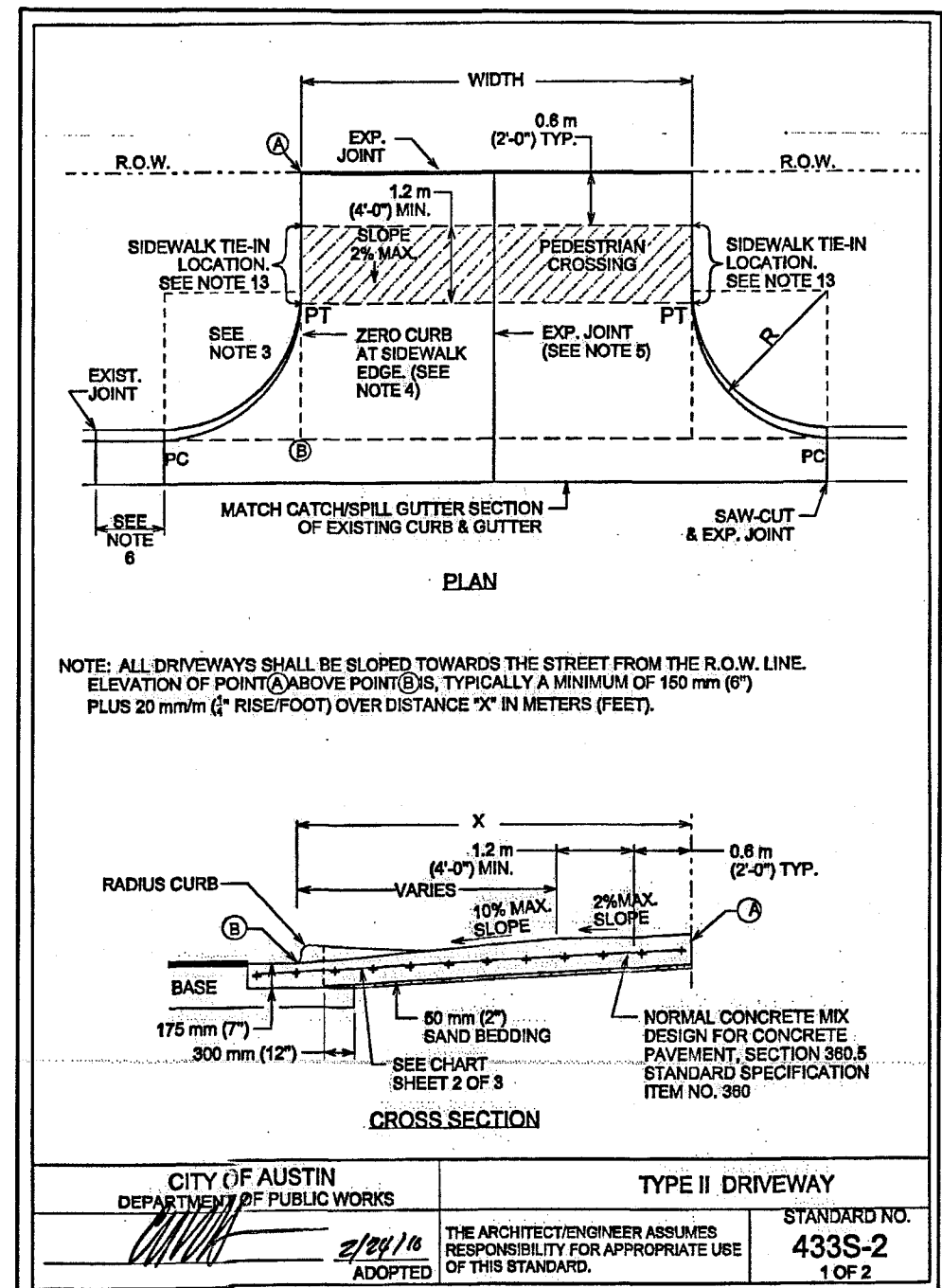


**GENERAL NOTES:**

- THIS STANDARD IS APPLICABLE FOR RAMP CONSTRUCTION ON CITY PROPERTY AND EASEMENT AREAS ONLY.
- PAVERS ARE REQUIRED FOR ALL CURB RAMP INSTALLATIONS.
- PAVERS WILL HAVE DETECTABLE WARNING THAT CONSISTS OF RAISED TRUNCATED DOMES WITH A DIAMETER OF 89 (2.2) mm, NOMINAL HEIGHT OF 0.27 (6.9) mm AND A NOMINAL CENTER TO CENTER SPACING OF 2.35 (60) mm AND SHALL CONTRAST VISUALLY WITH ADJOINING SURFACES EITHER LIGHT OR DARK OR DARK OR LIGHT PER ADAAG SECTION 4.03.2. MATERIAL USED TO PROVIDE CONTRAST SHALL BE AN INTEGRAL PART OF THE WALKING SURFACE. PAVEMENT PATTERN SHALL BE BARKET REVEAL UNLESS DIRECTED OTHERWISE BY THE ENGINEER OR DESIGNATED REPRESENTATIVE.
- TYPICAL SIDEWALK WIDTHS AND CURB RADII ARE SHOWN FOR ILLUSTRATION ONLY. REFER TO THE TRANSPORTATION CRITERIA MANUAL FOR SIDEWALK WIDTHS, CURB RADII AND CURB BASIS.
- THE PERMISSIBLE CONSTRUCTION JOINT BETWEEN THE PAVERS AND THE ADJOINING SURFACE SHALL BE LIMITED TO 1/2 (127) mm JOINT SIZE. CAPS LARGER THAN 1/2 (127) mm MUST BE APPROVED BY THE ENGINEER OR DESIGNATED REPRESENTATIVE. ALL JOINTS BETWEEN BRICKS AND ADJOINING SURFACE SHALL BE MORTAR FILLED UNLESS DIRECTED OTHERWISE BY THE ENGINEER OR DESIGNATED REPRESENTATIVE.
- MORTAR SHALL CONFORM TO STD. SPECIFICATION ITEM SECTION 4335.3.5. MORTAR AND GROUT, ALL OTHER CONCRETE SHALL CONFORM TO STD. SPECIFICATION ITEM 4005 CONCRETE FOR STRUCTURES, UNLESS OTHERWISE NOTED.
- CURB RAMP WITH RETURNED CURB MAY ONLY BE USED WHERE PEDESTRIANS WOULD NOT NORMALLY WALK DIAGONALLY ACROSS THE RAMP.

**CITY OF AUSTIN**  
DEPARTMENT OF PUBLIC WORKS  
STANDARD NO. 432S-2A  
APPROVED: *Bill Anderson 9/18/18*



USE	THICKNESS	REINFORCEMENT
DRIVEWAYS FOR PASSENGER VEHICLE PARKING LOTS	150 mm (6") MIN.	125 mm (5") MIN. CONCRETE WITH ONE LAYER OF 100 (4) BARS PLACED ON CHAIRS AT MIDDEPTH OF SLAB AT NO MORE THAN 450 mm (18") O.C. BOTH DIRECTIONS
ALL OTHERS	175 mm (7") MIN.	125 mm (5") MIN. CONCRETE WITH ONE LAYER OF 100 (4) BARS PLACED ON CHAIRS AT MIDDEPTH OF SLAB AT NO MORE THAN 450 mm (18") O.C. BOTH DIRECTIONS

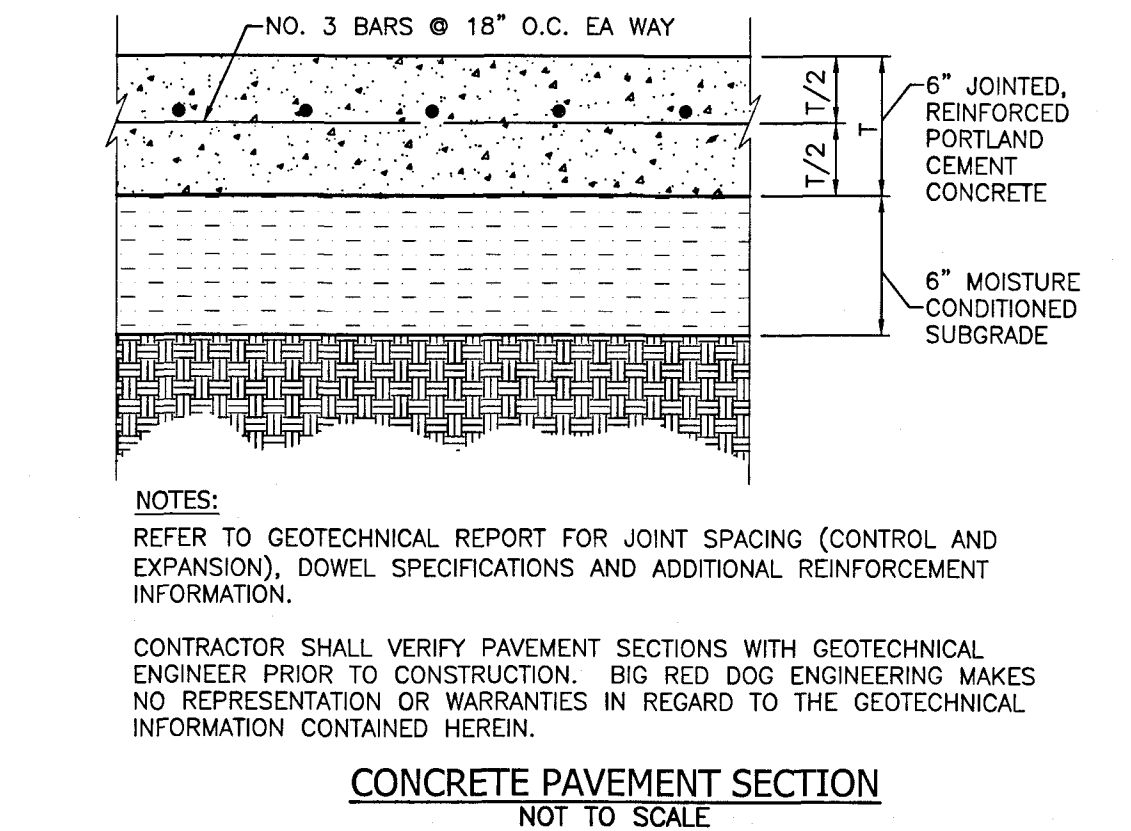
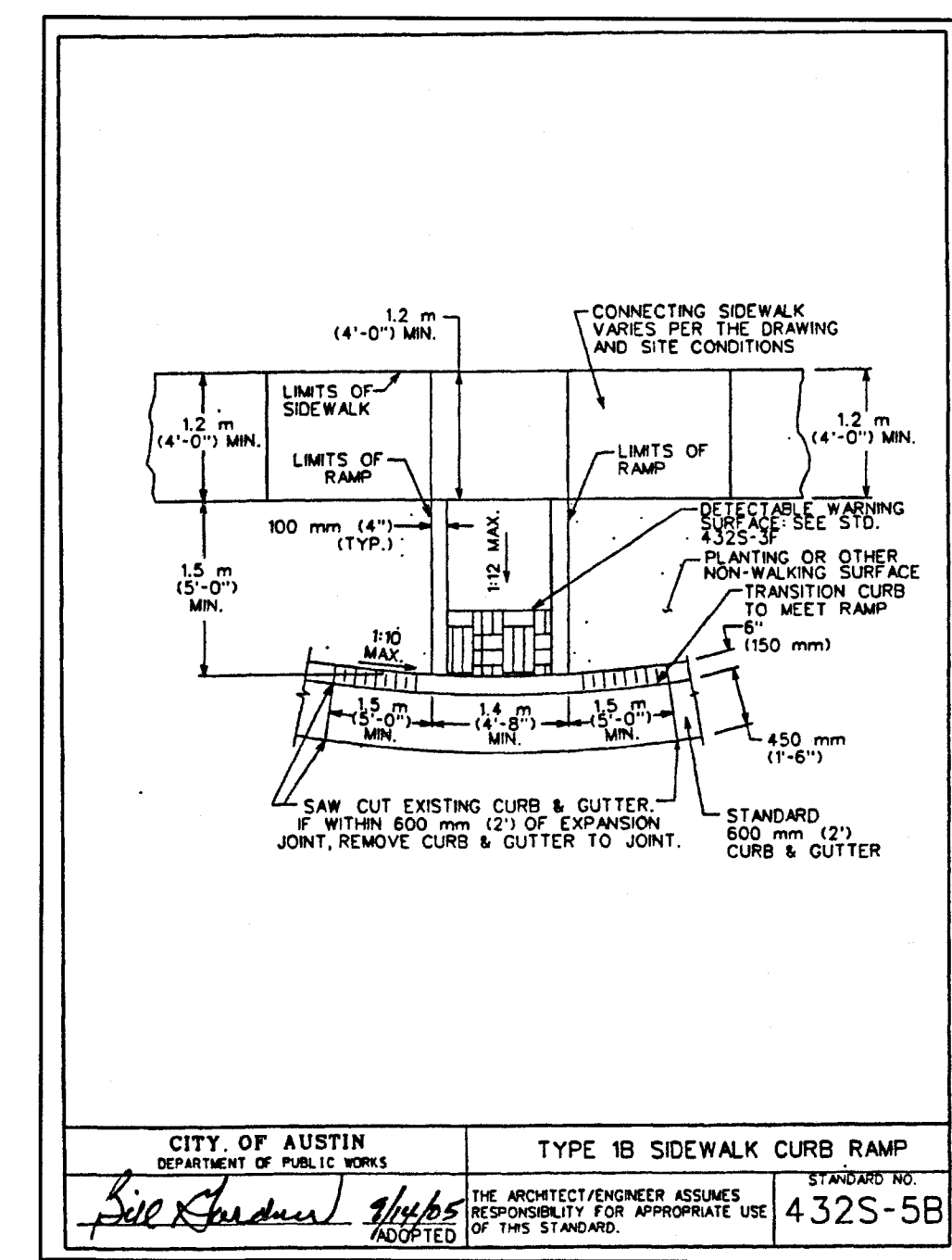
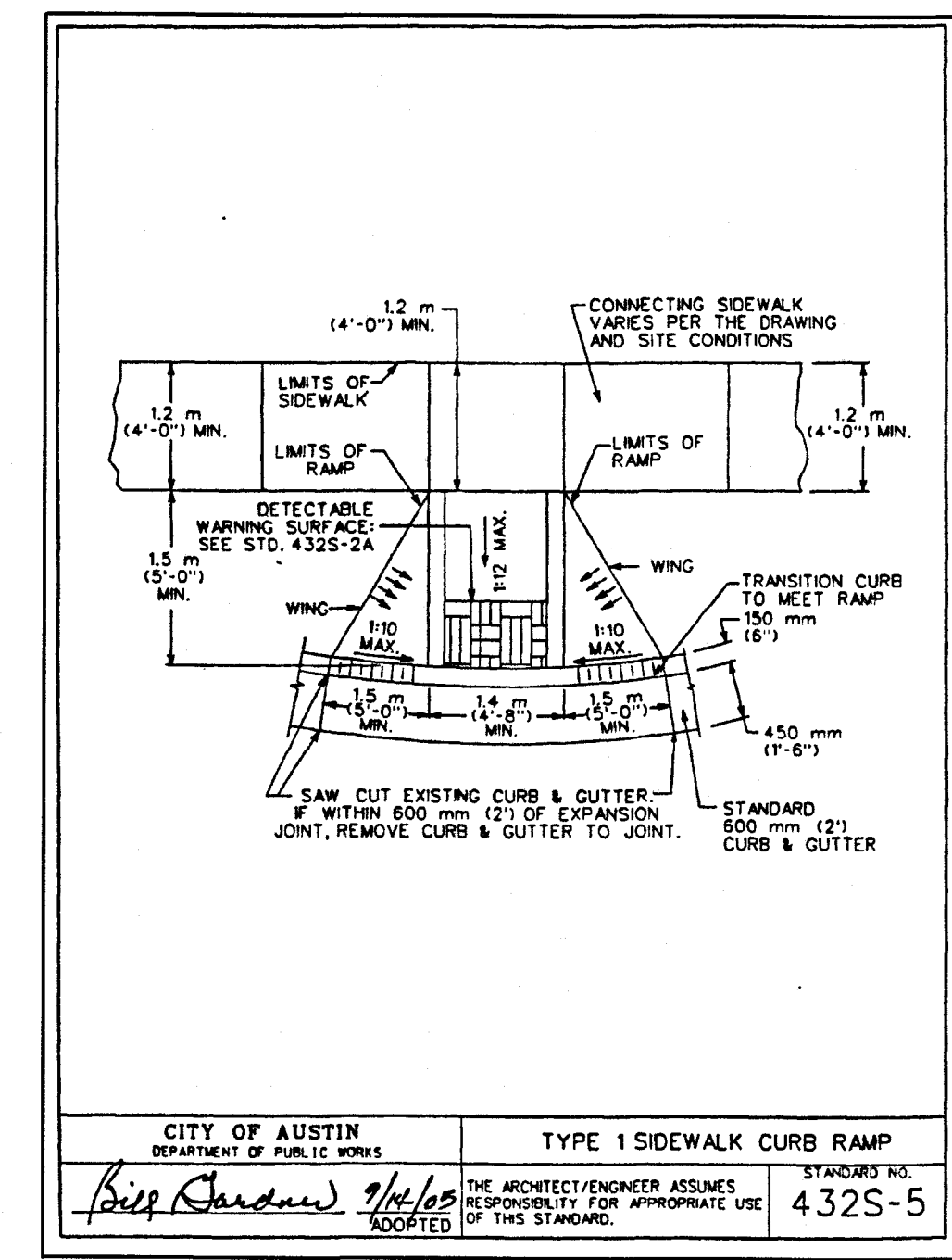
**ALLOWABLE GRADES**

DRIVEWAY VOLUME (ADT)	STANDARD	MAX
>1500	0%	3%
500-1500	2%	6%
<500	0%	15%

**NOTES:**

- ALL TYPE II DRIVEWAYS SHALL HAVE RADIUS ENDS.
- DRIVEWAY WIDTHS AND RADIUS DIMENSIONS, DRIVEWAY WAY TRAVEL REQUIREMENTS, AND GEOMETRIC TRANSPORTATION CRITERIA MANUAL, SECTION 5 DRIVEWAYS.
- THE DRIVEWAY EDGE SHALL BE SMOOTHLY TRANSITIONED INTO THE SIDEWALK TIE-IN LOCATION BEGINNING AT THE RADIUS PC LINE.
- "ZERO" CURB AT PT OR SIDEWALK EDGE, WHICHEVER IS ENCOUNTERED FIRST.
- PLACE AN EXPANSION JOINT DOWN THE CENTER OF DRIVEWAY ALL DRIVEWAYS.
- IF DRIVEWAY IS LESS THAN 4 METERS (13 FEET), REMOVE CURB AND GUTTER TO EXISTING JOINT AND FOUR MONOTHRALLY WITH DRIVEWAY.
- IF THE BASE IS OVER ELEVATED WHERE THE CURB AND GUTTER WERE REMOVED, BACKFILL WITH CONCRETE MONOTHRALLY WITH THE DRIVEWAY.
- TYPE II DRIVEWAYS ARE TO BE LOCATED NO CLOSER TO THE CORNER OF INTERSECTING RIGHT OF WAY THAN SIX (6) FEET FROM THE CORNER TO THE DRIVEWAY TOB; WHERE THE DRIVEWAY IS ESSENTIAL TO EMERGENCY VEHICLE ACCESS AND IS GREATER THAN 15%.
- SEE TRANSPORTATION CRITERIA MANUAL, SECTION 5 FOR OTHER DRIVEWAY REQUIREMENTS.
- THE SIDEWALK, REGARDLESS OF ITS LOCATION WITH RESPECT TO THE CURB OR PROPERTY LINE, SHALL BE CONNECTED TO THE DRIVEWAY AT THESE LOCATIONS:
- WATER METER BOXES AND WASTEWATER CLEAN OUTS ARE PROHIBITED FROM BEING LOCATED IN DRIVEWAY AREAS.

**CITY OF AUSTIN**  
DEPARTMENT OF PUBLIC WORKS  
STANDARD NO. 433S-2  
APPROVED: *Bill Anderson 9/18/18*



**SITE PLAN APPROVAL** SHEET 32 OF 72  
FILE NUMBER: SP-2018-0472C APPLICATION DATE: 10/5/18  
APPROVED BY COMMISSION ON UNDER SECTION 112.01  
CHAPTER 25-8 OF THE CITY OF AUSTIN CODE EXPIRATION DATE (25-8-01) LDC: 9/27/22 CASE MANAGER: Johnson

*Bill Anderson*  
DIRECTOR, DEVELOPMENT SERVICES DEPARTMENT  
RELEASED FOR GENERAL COMPLIANCE: 9/27/18 ZONING: CDD

REV. 1 CORRECTION 1  
REV. 2 CORRECTION 2  
REV. 3 CORRECTION 3

FINAL PLAT MUST BE RECORDED BY THE PROJECT EXPIRATION DATE, IF APPLICABLE. SUBSEQUENT SITE PLANS WHICH DO NOT COMPLY WITH THE CODE CURRENT AT THE TIME OF FILING, AND ALL REQUIRED BUILDING PERMITS AND/OR A NOTICE OF CONSTRUCTION (IF A BUILDING PERMIT IS NOT REQUIRED) MUST ALSO BE APPROVED PRIOR TO THE PROJECT EXPIRATION DATE.

44 EAST AVENUE  
AUSTIN, TRAVIS COUNTY, TEXAS 78701

CONSTRUCTION DETAILS

512-888-5560

WWW.BIGREDDOG.COM

**BIG RED DOC**  
ENGINEERING | CONSULTING  
2021 EAST 5TH STREET, SUITE 200  
AUSTIN, TEXAS, 78702

STATE OF TEXAS  
PROFESSIONAL ENGINEERING  
GEORGE B. HARRINGTON  
114304  
LICENSED PROFESSIONAL ENGINEER

SHEET  
**C-502**  
32 OF 72  
SP-2018-0472C

DATE PLOTTED: 10/18/18 10:00:00 AM  
LAST MODIFIED: 10/18/18 10:00:00 AM  
PLOTTER: HP PLOTTER  
PLOTTER MODEL: HP PLOTTER  
PLOTTER DRIVER: HP PLOTTER  
PLOTTER SETTINGS: HP PLOTTER